

35 PLE B-MODULE RIPPLE

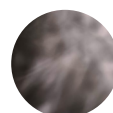
8W RIPPLE EFFECT LED ENGINE



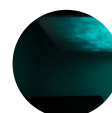
AVAILABLE OPTIONS

LED MODULE LIGHT THEME

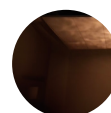
Ripple - 3 modes



Ivory



Aqua



Golden

**Configurable by DALI or
Wireless Configurator.*

BEAM ANGLE



CONTROL INTERFACE



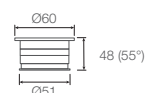
**0-10V is valid for brightness
control only. Light theme and
movement have to be
configured via wireless
configurator.*

INPUT



(24V)

DIMENSIONS (MM)



SPECIFICATIONS

Family Type	35 Series	Ingress Protection	IP54 (LED engine only)
Typical Operating Voltage	24V	Weight	110g
Typical Operating Current	330mA	Control Interface	Activator with DALI interface
System / Input Power	8W	Configuration	Light theme, brightness and movement are configurable via DALI or wireless configurator
Colour	Black	Mains Voltage	24V DC constant voltage
Materials	Aluminium, plastic	Fire Safety	Glow wire test 850°C, UL94V-0, VW-1
Compatibility	Compatible with ELR size-3 fixtures	Flammability Mark	F
Lifetime	100,000 hours (80% lumen maintenance at Ta = 25°C), B10	Safety Class	Class 3
Beam Angles	55°	Standards	IEC 62031
Light Theme	Ripple - Ivory, Aqua, Golden	Regulatory Markings	CE, RoHS

35 PLE B-MODULE RIPPLE

Height (m)		Emax (lx)	LED Module		Luminous Flux (lm)
		55°	Type	Input Power	Ripple
1	E(0°)	145	35 PLE Ripple	8W	55°
	Cone Ø (m)	1.39			160
2	E(0°)	36			
	Cone Ø (m)	2.78			
3	E(0°)	16			
	Cone Ø (m)	4.17			
4	E(0°)	9			
	Cone Ø (m)	5.56			
5	E(0°)	6			
	Cone Ø (m)	6.95			

ORDERING MATRIX CHART

LED Module						Control	
Input Power		Beam Angle		Light Theme		Interface	
ELR35PLE-BM.8	8W	55	55°	R1-IV	Ripple - Ivory	DA	DALI
				R1-AQ	Ripple - Aqua	AN	0-10V*
				R1-GD	Ripple - Golden		

*0-10V is valid for brightness control only. Light theme and movement have to be configured via wireless configurator.
Wireless configurator is sold separately.

example: ELR35PLE-BM.8.55.R1-AQ.DA