



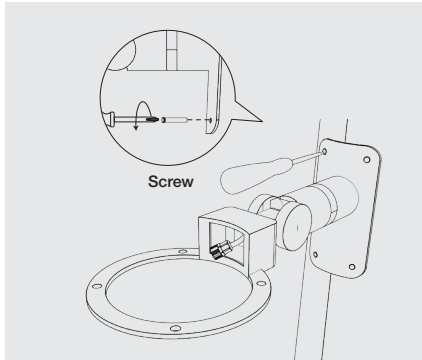
Borrowed from Nature

# DAPPLE LIGHT PROJECTOR - POLE LIGHT INSTALLATION GUIDE

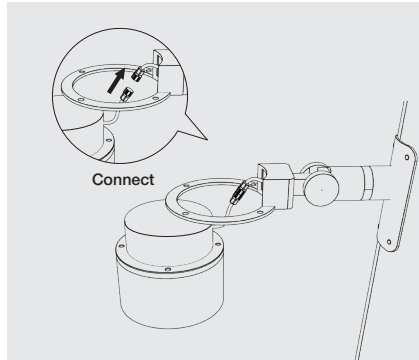


**PLEASE MAKE SURE THAT MAINS IS DISCONNECTED BEFORE PROCEEDING!**

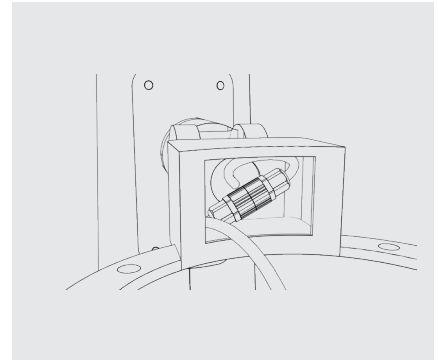
Follow the steps as illustrated below



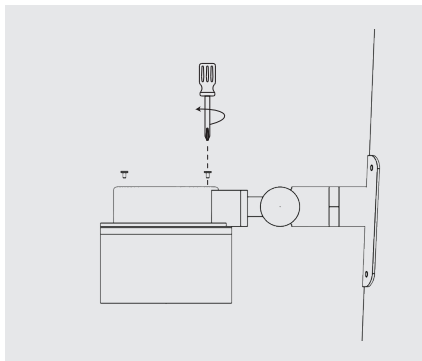
1. Secure fixture to the light pole.



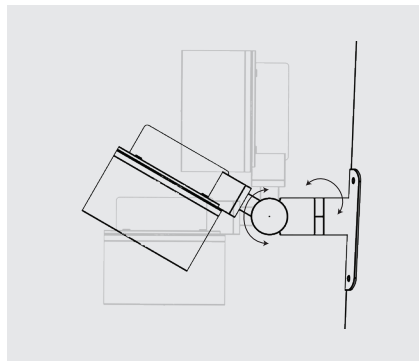
2. Install the LED Module



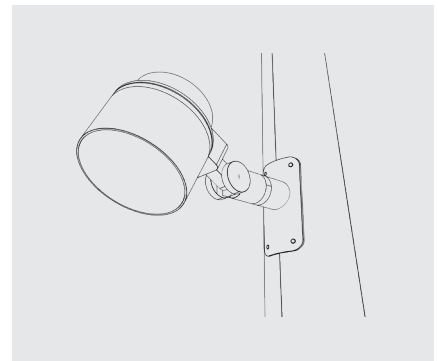
3. Push the connector into the housing.



4. Fasten the screw to lock up LED Module.

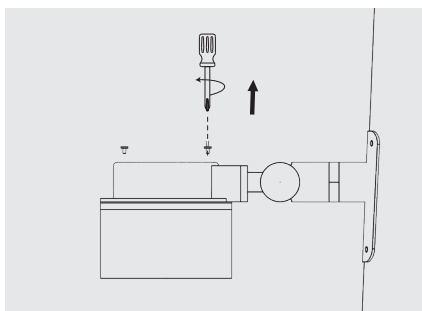


5. Adjust Dapple light projector to the desired tilt and rotation angle, lock the position.

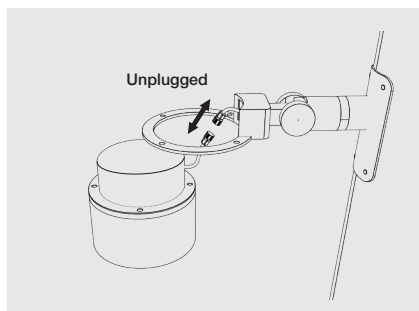


6. Installation complete.

Follow the remove module from fixtures method as illustrated below



1. Unscrew to unlock the LED Module. The tilt and rotation aiming lock can left untouched.



2. Unplugged the connector. The LED Module now is free. Can move to workstation to do maintenance.

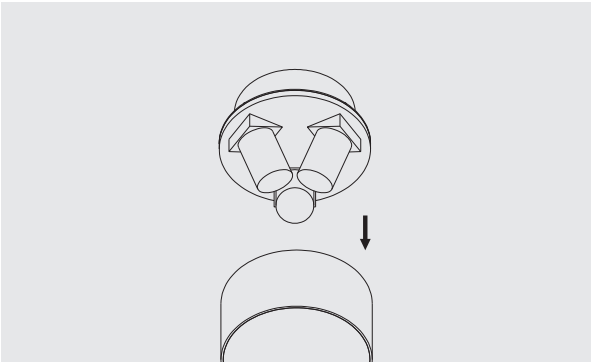


Borrowed from Nature

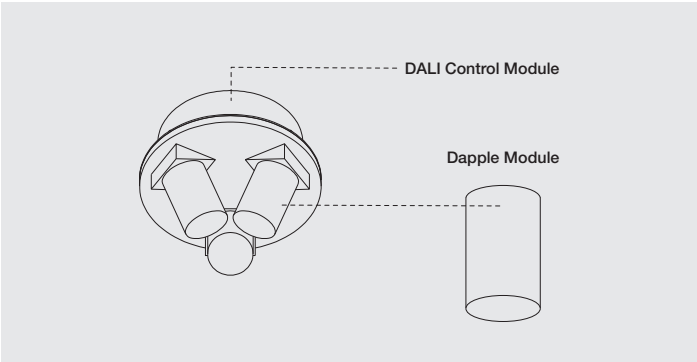
# DAPPLE LIGHT PROJECTOR - POLE LIGHT INSTALLATION GUIDE

 PLEASE MAKE SURE THAT MAINS IS DISCONNECTED BEFORE PROCEEDING!

Follow the steps as illustrated below

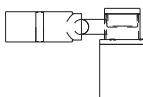
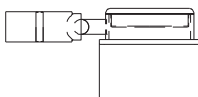
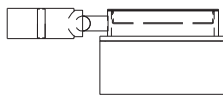

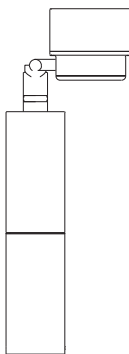
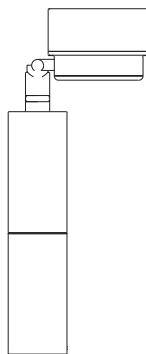


1. Unscrew and slide down front cover to expose the individual Dapple Module.



2. Each Dapple Module can be removed and exchanged. DALI Control Module can be removed and exchanged.

A families of Dapple Projector/Uplighter are using the same Dapple Module

8W	24W	56W
	<b>Dapple Projector</b> 	
	<b>Dapple Uplighter</b> 	



Borrowed from Nature

# DAPPLE LIGHT PROJECTOR - POLE LIGHT INSTALLATION GUIDE



PLEASE MAKE SURE THAT MAINS IS DISCONNECTED BEFORE PROCEEDING!

## Driver Wiring Installation

